

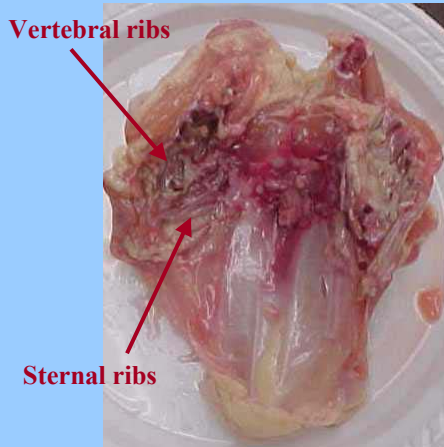
# PARTS IDENTIFICATION



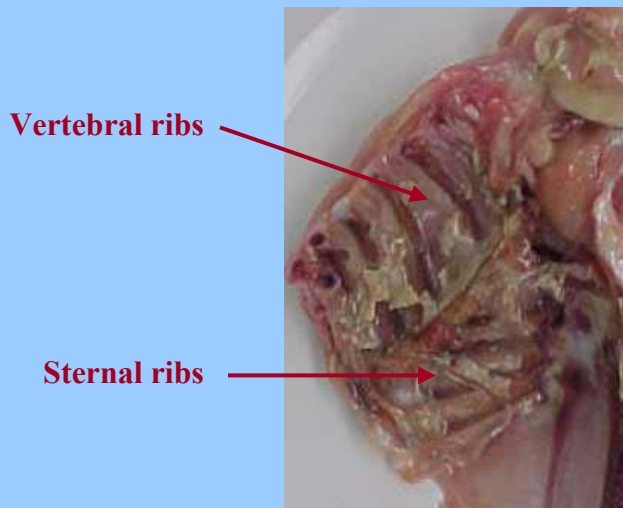
## Parts Identification

- Breast with ribs – whole or split
- Breast without ribs – whole or split
- Wishbone
- Breast tenderloin
- Boneless, skinless whole breast
- Boneless, skinless breast half
- Drumstick
- Thigh
- Skinless, boneless thigh
- Leg
- Wing
- Wing mid-joint
- Back
- Half
- Breast quarter
- Breast quarter without wing
- Leg quarter
- Thigh with back
- Drumette
- Liver, Gizzard, Heart
- Neck

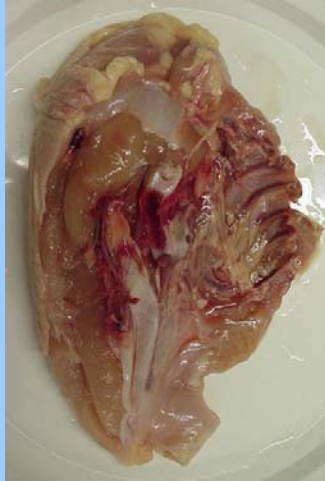
## Breast with ribs – whole



## Breast without ribs – whole or split



## **Breast with ribs –split**



## **Breast without ribs – whole**



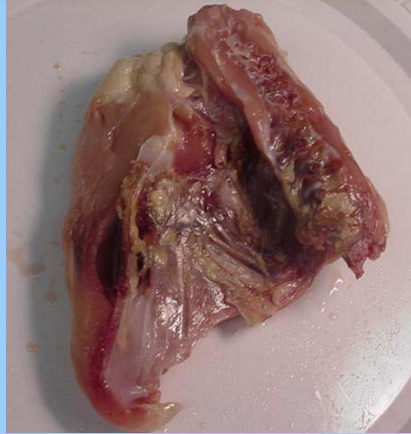
## Breast without ribs – split



## Breast quarter



## Breast quarter without wing



## Breast quarter without wing

vs

## Breast with ribs - split



**Breast quarter without wing**

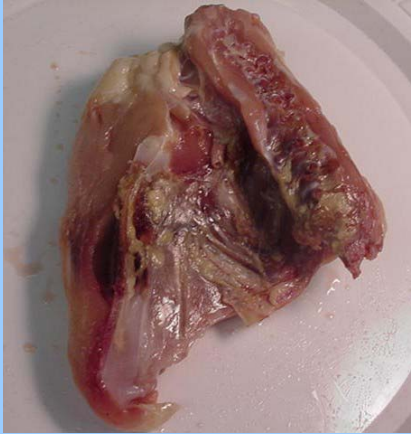


**Breast with ribs - split**

**Breast quarter without wing**

**vs**

**Breast with ribs - split**



**Breast quarter without wing**



**Breast with ribs - split**

**Breast quarter without wing**

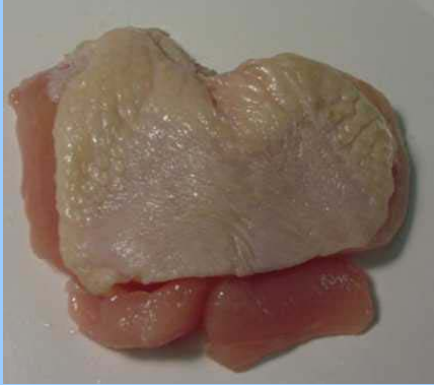
**vs**

**Breast with ribs - split**





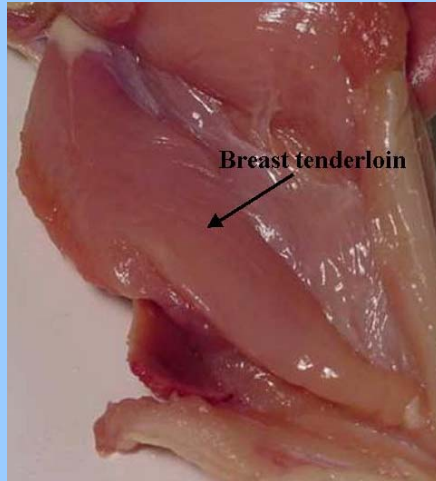
## Wishbone



## Wishbone



## Breast tenderloin



## Boneless, skinless whole breast





## **Boneless, skinless breast half**



## **Drumstick**



## Thigh



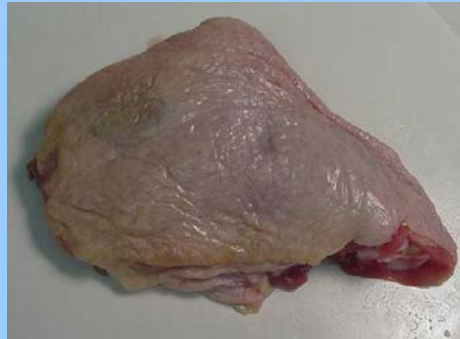
## Thigh with back



## Thigh versus Thigh with back



Thigh

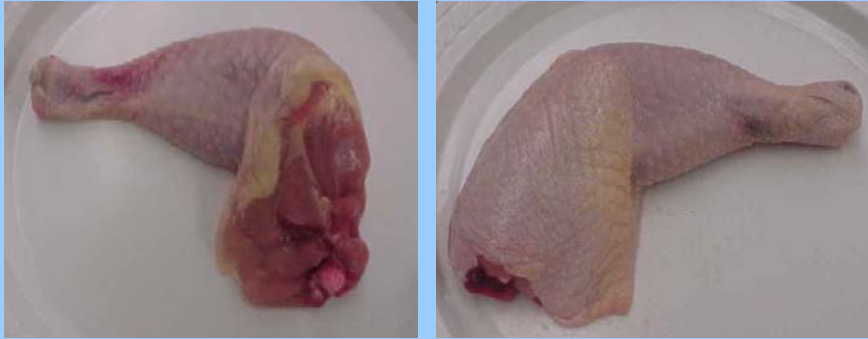


Thigh with back

## Skinless, boneless thigh



## Leg



## Leg quarter



# Wing



# Wing



## Wing mid-joint



## Drumette





## Back



## Half



## **Giblets: liver, gizzard, heart**



## **Neck**



## **Drumstick versus Neck**



## **Parts Identification**

### **Practice**



THIGH



**BREAST WITH RIBS - WHOLE**



DRUMSTICK





**BREAST WITHOUT RIBS - WHOLE**



WING



GIZZARD (outside face up)



**WHOLE LEG**



BREAST QUARTER

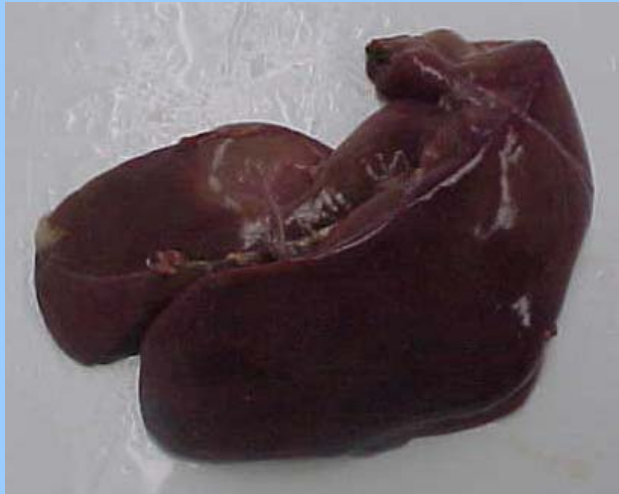
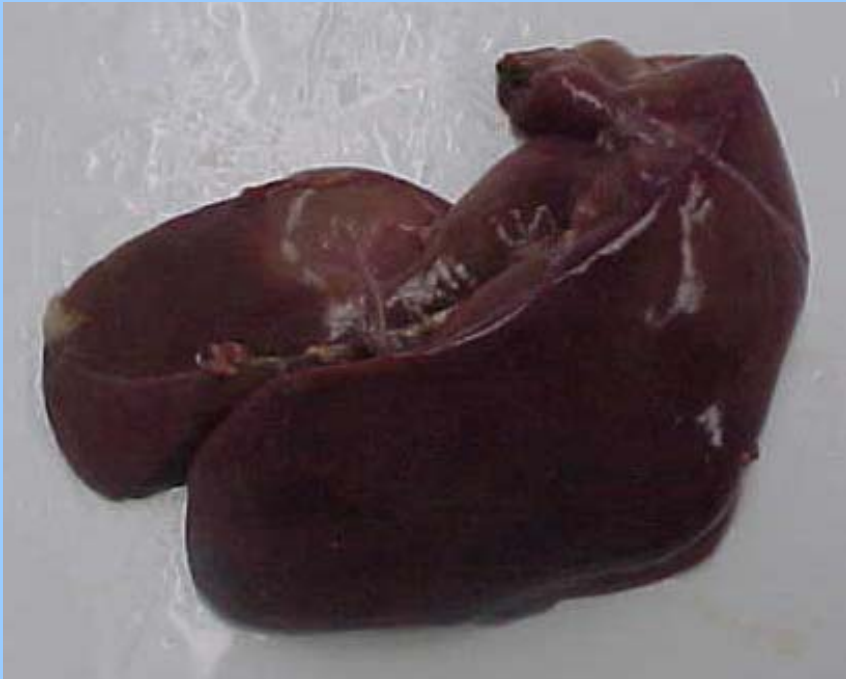


**BREAST TENDERLOIN**





NECK



LIVER



WING MID-JOINT



BACK



LEG QUARTER



DRUMETTE



NECK - broken