

**2002 FFA Nursery/Landscape  
Career Development Event  
Landscape Drawing Practicum**

Note: In photocopying, the drawing is slightly stretched (about 1% or 0.1" for every 10"). Measurements on the plan to the closest one-foot scale equivalent are satisfactory for all calculations.

**Mark all answers carefully and properly on the separate answer sheet.**

1. Based on the indicated scale of this plan, a line on the plan that is 7.25" long would represent a distance of \_\_\_\_\_ in the landscape.
  - a. 72.5 feet
  - b. 145 feet
  - c. 725 feet
  - d. 7.25 feet
  
2. What is the length of the fence between Office Building #1 and Office Building #2?
  - a. 41 ½ feet
  - b. 83 feet
  - c. 126 ½ feet
  - d. 165 feet
  
3. What is the width of the exposed aggregate plaza (measure east to west)?
  - a. 33 feet
  - b. 54 feet
  - c. 66 feet
  - d. 87 feet
  
4. The walk between the exposed aggregate plaza and the brick plaza (not including the steps) has an area of:
  - a. 2064 square feet.
  - b. 516 square feet.
  - c. 348 square feet.
  - d. 279 square feet.
  
5. If plant number 1 is to be a medium-size shade tree, which of the plants listed below would best serve the purpose?
  - a. *Acer rubrum*
  - b. *Cercis canadensis*
  - c. *Poa pratensis*
  - d. *Tsuga canadensis*

6. How many parking spaces for cars can be marked along a curb that is 240 feet long?
- 20
  - 24
  - 30
  - 48
7. The fence between Office Buildings 1 and 2 is to be 4 feet high. Constructed as an alternate board fence, the cost for materials and labor will be \$3.85 per square foot of fence face. If that fence is 145 feet long (it isn't), what would be the total cost?
- \$987
  - \$1,285
  - \$2,230
  - \$3,420
8. The area enclosed by the walk and fence designated Turf Area #1 is to be sodded. What quantity of sod is required?
- 3,680 square yards
  - 2,456 square yards
  - 1,030 square yards
  - 409 square yards
9. A sheared hedge 4 feet high and 4 feet wide is to be developed with plant number 5. The most appropriate choice from the list below for the plant number 5 is:
- Liriodendron tulipifera*
  - Parthenocissus tricuspidata*
  - Taxus spp.*
  - Wisteria sinensis*
10. A concrete curb will border the pavers in the brick plaza. The curb will cost \$6.80 per linear foot installed, for a total cost of:
- \$680.
  - \$940.
  - \$1,360.
  - \$1,850.
11. Turf areas 6 and 7 will be seeded with turf-type fescue at 5 pounds per 1000 square feet. Their combined area equals 445 square yards. How much seed is needed for this part of the job?
- 20 pounds
  - 30 pounds
  - 40 pounds
  - 50 pounds

12. The landscape bed on the southwest corner of Office Building #2 has 1200 square feet of surface area. What volume of hardwood bark is needed to install a 3-inch mulch layer over this bed?
- 11 cubic yards
  - 15 cubic yards
  - 18 cubic yards
  - 27.5 cubic yards
13. Plant number 8 is specified as a 4-5 foot B&B Burkwood Viburnum. You use the following records for estimating the installation cost of plants this size:  
Crew = 2 workers, Time = 20 minutes per plant, Labor Charge = \$12.00 wage rate  
What is your estimate for installing all the Burkwood Viburnums?
- \$120
  - \$96
  - \$40
  - \$20
14. If a pallet of brick pavers costs \$940 and cover 360 square feet, what is the cost for pavers to lay a patio measuring 72 feet by 50 feet?
- \$6,360
  - \$9,400
  - \$12,800
  - \$15,300
15. The nursery source for your plants offers a price break for large orders, as follows:
- |                                       |                       |
|---------------------------------------|-----------------------|
| 1-5 plants .....                      | Regular catalog price |
| Next 5 plants (plants 6-10) .....     | 10% discount          |
| Additional plants (plants 11 +) ..... | 20% discount          |
- Plant number 3 lists at \$42 in the catalog. What is the total cost for all these plants in the plan?
- \$504
  - \$567
  - \$629
  - \$630
16. Plant number 3 was originally specified as a 4 to 5-foot B&B Chinese Holly to utilize the spined leaves to deter pedestrians from walking through that planting area. Your nursery source is not able to supply all the plants you need, but they proposed an alternative choice that could offer a similar effect. Which plant below would that be?
- Ilex crenata*
  - Pyracantha coccinea*
  - Ajuga reptans*
  - Fagus sylvatica*

17. Specifications for the bid require that each of the plant number 1 shade trees will (1) have tree wrap applied from the soil ball to the first limbs, (2) be staked and guyed, and (3) have a mulch ring of hardwood bark applied over the backfill. Your estimates for the materials and labor for these procedures are as follows:
- ~ Tree wrap material = \$1.20 per tree
  - ~ Tree wrap labor = 5 minutes per tree at \$12.00 per hour
  - ~ Guying materials = \$2.30 per tree
  - ~ Guying labor = 15 minutes per tree at \$12.00 per hour
  - ~ Mulching materials = 3 cubic feet per tree at \$27.00 per cubic yard
  - ~ Mulching labor = 10 minutes per tree at \$12.00 per hour
- What is your total estimate for wrapping, guying, and mulching one of these trees?
- a. \$12.50
  - b. \$15.00
  - c. \$18.40
  - d. \$20.20
18. The pool in the center of the exposed aggregate plaza has a depth of 2 feet. How much water will this pool hold if filled completely to the top? (Hint: 1 gallon = 0.134 cubic foot)
- a. 3,800 gallons
  - b. 2,456 gallons
  - c. 1.903 gallons
  - d. 850 gallons
19. You calculate this job will need 180 cubic feet of peat moss incorporated in the planting beds. Four suppliers give you the following quotes:
- ~ Supplier A offers 3-cubic-foot bags at \$4.20 per bag plus 10% for shipping
  - ~ Supplier B offers 5-cubic-foot bags at \$6.00 per bag plus 12% for shipping
  - ~ Supplier C offers 5-cubic-foot bags at \$5.80 per bag plus 15% for shipping
  - ~ Supplier D offers bulk shipment at \$27 per cubic yard plus \$40 shipping fee, any quantity
- Which supplier offers the best price for the quantity you need?
- a. Supplier A
  - b. Supplier B
  - c. Supplier C
  - d. Supplier D
20. This commercial-property landscape plan will provide views for the office workers that
- a. are generally asymmetric for all views.
  - b. are generally symmetric from all views.
  - c. are mostly blocked by trees.
  - d. suffer from excessive glare off the parking lots.

Office Bldg. # 1

Turf Area 2

Turf Area 3

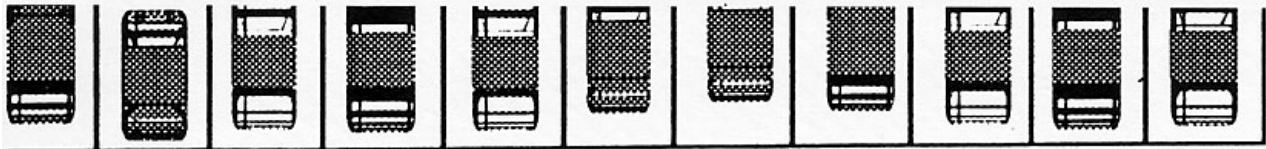
Brick Plaza

Walk

Note: Electronic transfer of this plan may have altered the scale. Please check the scale by measuring the line below. It should be exactly 2 inches.

Turf Area 4





Fence

Turf Area 1

Walk

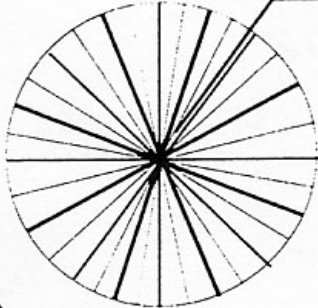
6

Office Bld

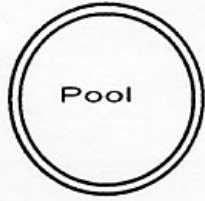
# 2

Turf Area 7

7



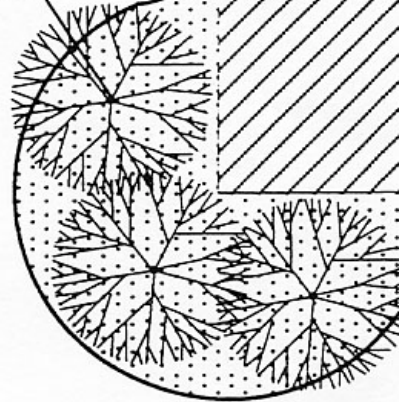
Exposed Aggregate  
Plaza



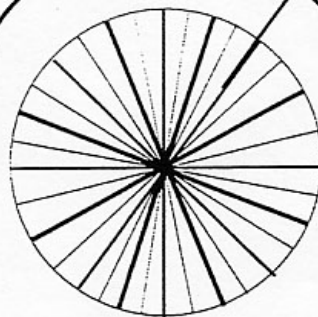
Pool

Turf Area 5

2



7

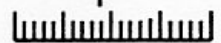


Turf Area 6

3



NORTH



Scale 1" = 20'

6

alk



**National FFA Nursery/Landscape Career Development Event  
Landscape Drawing Practicum  
2002 Answer Key**

**Calculations illustrate possible solution methods – other methods can also apply**

1.     b
2.     d
3.     c
4.     b
5.     a
6.     a
7.     c
8.     d
9.     c
10.    d
11.    a
12.    a
13.    c
14.    b
15.    b
16.    b
17.    a
18.    a
19.    c
20.    b