

National FFA Nursery/Landscape Practicum 1999

Agricultural Education Curriculum Office

This is the fenced-in backyard of an older, urban row house. The Thorpe family is from London, England, and their design goal is for a secure and private landscape that combines features of the native English gardens (roses, herbs, flower borders) with outdoor living space of American design (open turf, water, terrace). The lot has a gradual slope from the NE down to the SW, such that there is an 8-inch step from the terrace to the upper lawn area and another 8-inch step to the lower lawn. The brick sitting area and the edging on the water feature are also 8 inches above the upper lawn surface.

NOTE: In photocopying, the drawing is slightly stretched (about 1% or 0.1" for every 10"). Measurements on the plan to the closest one-half-foot equivalent are satisfactory for all calculations. When printing, you must make sure that the printer is NOT set on "Fit to Page" and that it is set on "Print as Image." This is the only way that both the questions and the map will print out correctly. After printing out the landscape map, carefully tape the two halves together. The distance from line A to B should be 15.3" if the two halves have been taped together properly.

Mark all answers carefully and properly on the separate answer sheet.

1. If a line is 8 inches long on a drawing that is designated as having a 1"=12' scale, then it represents a line _____ long in the landscape.
 - A. 64 feet
 - B. 96 feet
 - C. 160 feet
 - D. 200 feet
2. Based on the scale given for this plan (not the scale given in question #1), a measurement of 100 feet equals
 - A. 6 ½ inches
 - B. 13 inches
 - C. 20 inches
 - D. 25 inches
3. Based on the scale given for the plan, a measurement of 14 7/8 inches equals
 - A. 35.5 feet
 - B. 42.5 feet
 - C. 59.5 feet
 - D. 122.5 feet
4. What is the width of this lot measured along the back fence?
 - A. 30 ½ feet
 - B. 59 feet
 - C. 88 ½ feet
 - D. 118 feet

5. The drawing symbol used for P-2, P-3, and P-5 suggests those plants likely are to be cultivars of
- A. *Ajuga reptans*
 - B. *Aquilegia x hybrida*
 - C. *Hosta x hybrida*
 - D. *Poa pratensis*
6. The plan includes a raised brick-paver sitting area. What is the surface area of this sitting area, including the perimeter edging pavers shown?
- A. 86 square feet
 - B. 98 square feet
 - C. 126 square feet
 - D. 178 square feet
7. How much surface area will be planted with GC-5 in the corner bed of the terrace? (Subtract the area under the statue base in the calculation.)
- A. 4 square feet
 - B. 11 square feet
 - C. 16 square feet
 - D. 28 square feet
8. How many needle leaf evergreen plants are included in this plan?
- A. 2
 - B. 3
 - C. 7
 - D. 12
9. Which plant below would provide the most effective character for V-1?
- A. *Hedra helix*
 - B. *Lonicera japonica* ‘Halliana’
 - C. *Vinca minor*
 - D. *Wisteria sinensis*
10. You have 82 square feet of bed area to be transplanted with ground covers. You will purchase 7 flats holding 48 plants each for this total area. The chart below provides transplanting time estimates, which vary according to the plant spacing. In this case you estimate the time for transplanting as

<u>Time to remove, face, and plant per flat of 48 plants</u>				
spacing =	6"	9"	12"	15"
minutes =	18	20	21	22

- A. 2.1 hours
- B. 2.33 hours
- C. 2.45 hours
- D. 2.6 hours

11. The terrace bed with G-1, GC-1, P-1, and S-1 is 42 square feet. You intend to improve the soil by incorporating a 4-inch-deep layer of peat moss. Only one bag (8 cubic feet) was delivered to the site. Is this enough peat moss?

- A. Yes. One bag will provide for a layer 5 inches deep.
- B. Yes. It is within $\pm 5\%$ (0.4 cubic foot) of the amount needed.
- C. No. It is only about 60% of the amount needed.
- D. No. This area requires at least 3 bags of peat moss.

12. Your truck can haul 16 cubic yards of bark mulch. If you spread the mulch in a layer 3 inches thick, how much plant bed area can you mulch from one truck load?

- A. 256 square feet
- B. 810 square feet
- C. 1242 square feet
- D. 1730 square feet

13. The water feature needs to be excavated. You need to determine its surface area, including the concrete sides inside the brick edge and fence. It appears to be a triangle plus a rectangle, but you quickly see the sides are not the same length. The surface area of the water feature

- A. Equals 42 square feet
- B. Equals 68 square feet
- C. Equals 84.5 square feet
- D. Can not be determined using a ruler and a calculator

14. This plan needs 330 square feet of brick paver surface and 106 linear feet of brick edging. You need $4 \frac{1}{3}$ pavers per square foot of surface and 6 pavers per linear foot of edging. Including an extra 5% for cutting and breakage, how many pavers do you need for this job?

- A. 1275 pavers
- B. 2175 pavers
- C. 3075 pavers
- D. 4575 pavers

15. Your contract includes installing the low-voltage step and ground lights but not the wall lights. You need to order

- A. 4 step lights and 6 ground lights
- B. 4 step lights and 12 ground lights
- C. 6 step lights and 15 ground lights
- D. 7 step lights and 15 ground lights

16. You will sod the new lawn areas, a total of 90 square yards of sod. Two sources listed below will cut to order the sod type you want, and they have equivalent shipping charges.

Company A: sod in rolls = 15 inches by 12 feet long at \$4.50 per roll

Company B: sod in squares = 36 inches by 36 inches at \$3.00 per square

What is the total cost difference between these companies for this order?

- A. Company A sod will cost \$27.00 less
- B. Company B sod will cost \$27.00 less
- C. Company B sod will cost \$38.00 more
- D. Both will cost the same

17. BE-1 is intended to provide year-round interest covering the fence in a narrow space. This suggests an espaliered

- A. *Berberis thunbergii*
- B. *Chaenomeles speciosa*
- C. *Pyracantha coccinea*
- D. *Syringa vulgaris*

18. It takes 20 minutes for your 2-member planting crew to install and stake a medium size tree. They each earn \$15.00 per hour in wages and benefits. Your labor bill for these two workers to plant all the trees (T) in this plan should be

- A. \$10.00
- B. \$20.00
- C. \$40.00
- D. \$80.00

19. You need 8 “S” plants and 20 “BE” plants for this plan. You can purchase them from Sandy’s Plants at \$16.00 each. The quote from Tom’s Nursery is “S” at \$10.00 each and “BE” at \$20.00 each. Juan’s Nursery offers both “S” and “BE” at \$18.00 each, but orders over 20 plants are discounted 10% from the total cost. Which one source will you choose?

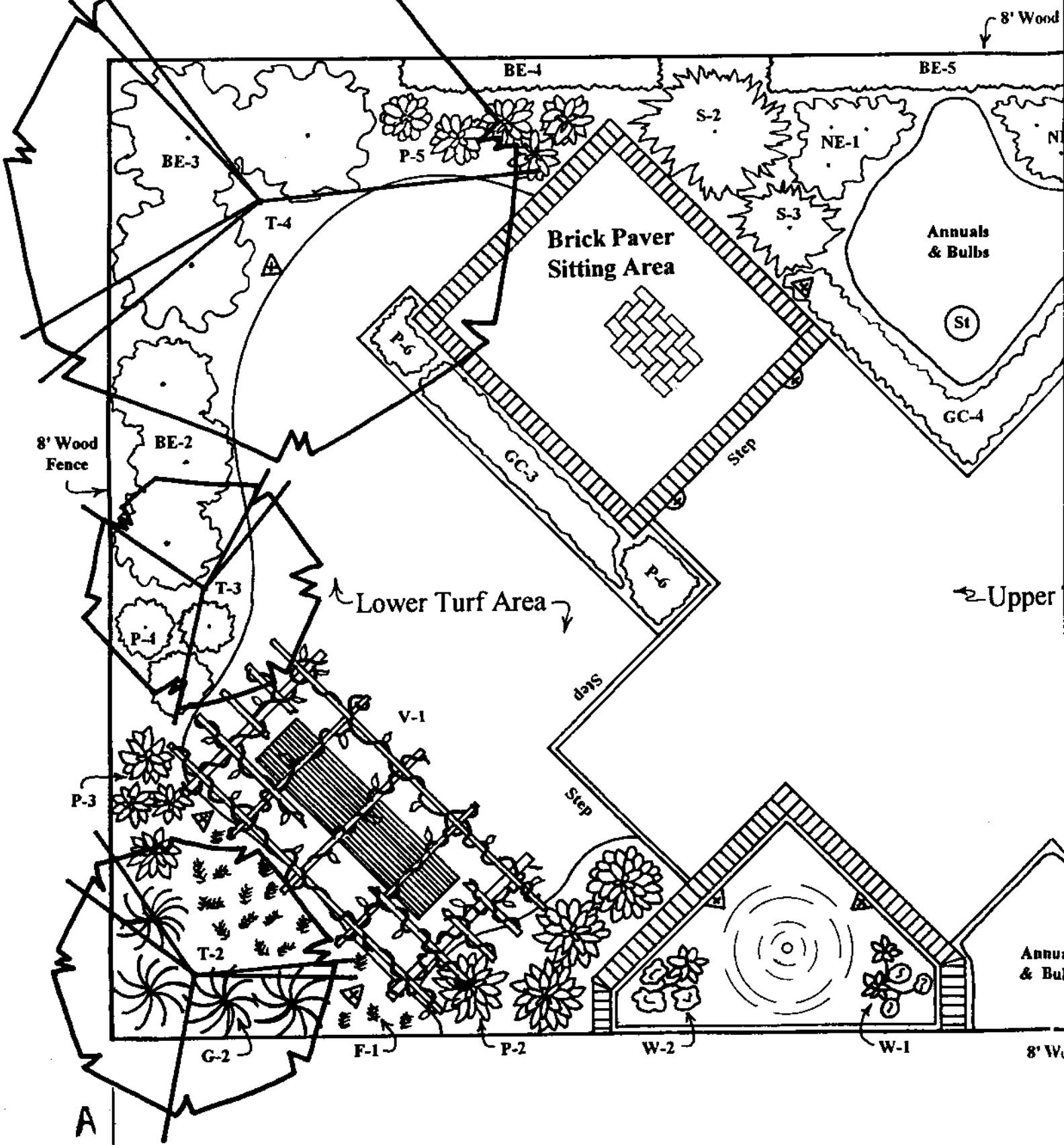
- A. Juan’s Nursery
- B. Sandy’s Nursery
- C. Tom’s Nursery
- D. Juan’s and Sandy’s price is the same, but Tom’s price is higher.

20. All turf areas will have steel edging along the planting beds. (Note: treated wood separates the upper and lower turf areas from the sitting area to the water feature.) There is 45 feet of edging along the lower turf area. Add this to your measurement for edging for the upper turf area. How many 10-foot lengths of steel edging will you need, with 10% extra for cutting?

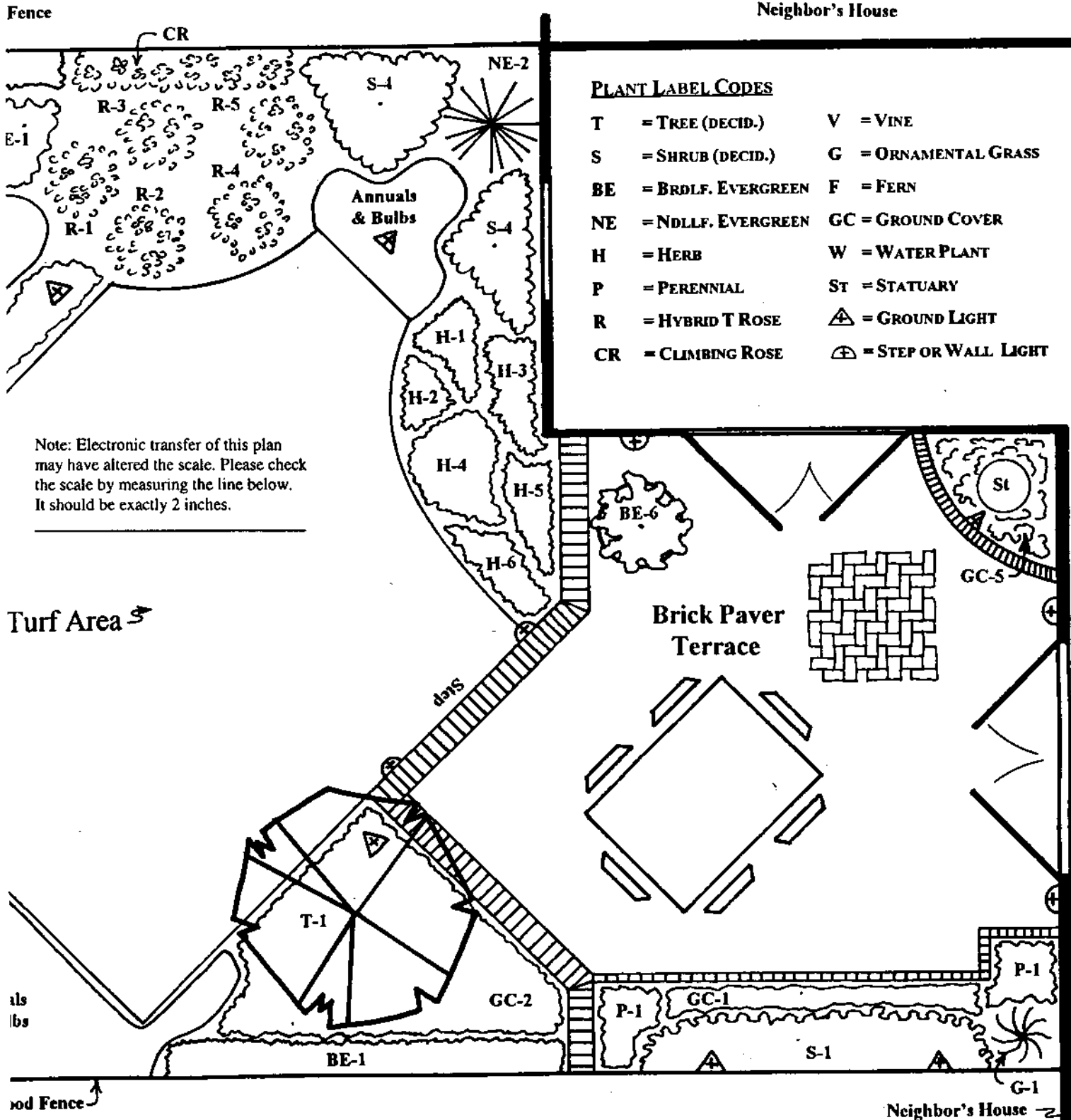
- A. 5
- B. 7
- C. 12
- D. 15

1999 LANDSCAPE DRAWING PRACTICUM

NATIONAL FFA NURSERY/LANDSCAPE CAREER DEVELOPMENT EVENT



SCALE: 1/4" = 1'



PLANT LABEL CODES

- | | |
|-----------------------|------------------------|
| T = TREE (DECID.) | V = VINE |
| S = SHRUB (DECID.) | G = ORNAMENTAL GRASS |
| BE = BRDLF. EVERGREEN | F = FERN |
| NE = NDLLF. EVERGREEN | GC = GROUND COVER |
| H = HERB | W = WATER PLANT |
| P = PERENNIAL | St = STATUARY |
| R = HYBRID T ROSE | ⚡ = GROUND LIGHT |
| CR = CLIMBING ROSE | ⚡ = STEP OR WALL LIGHT |

Note: Electronic transfer of this plan may have altered the scale. Please check the scale by measuring the line below. It should be exactly 2 inches.

Turf Area

Brick Paver Terrace

als
lbs

Mod Fence

Neighbor's House

ANSWER KEY

1. B
2. D
3. C
4. A
5. C
6. A
7. B
8. C
9. D
10. A
11. C
12. D
13. A
14. B
15. B
16. A
17. C
18. C
19. B
20. C